

ERRATUM

Anja Huss

“Stochastic Optical Fluctuation Imaging – Labels and Applications”

In Figure 35 and 40 images calculated from raw data obtained by Melanie Dannemeyer, University of Göttingen, are shown. These data were mistakenly not attributed correctly so that the reader can get the impression the data were obtained by the author. The data were previously unpublished. The author apologizes for the error.

Göttingen, July 2015

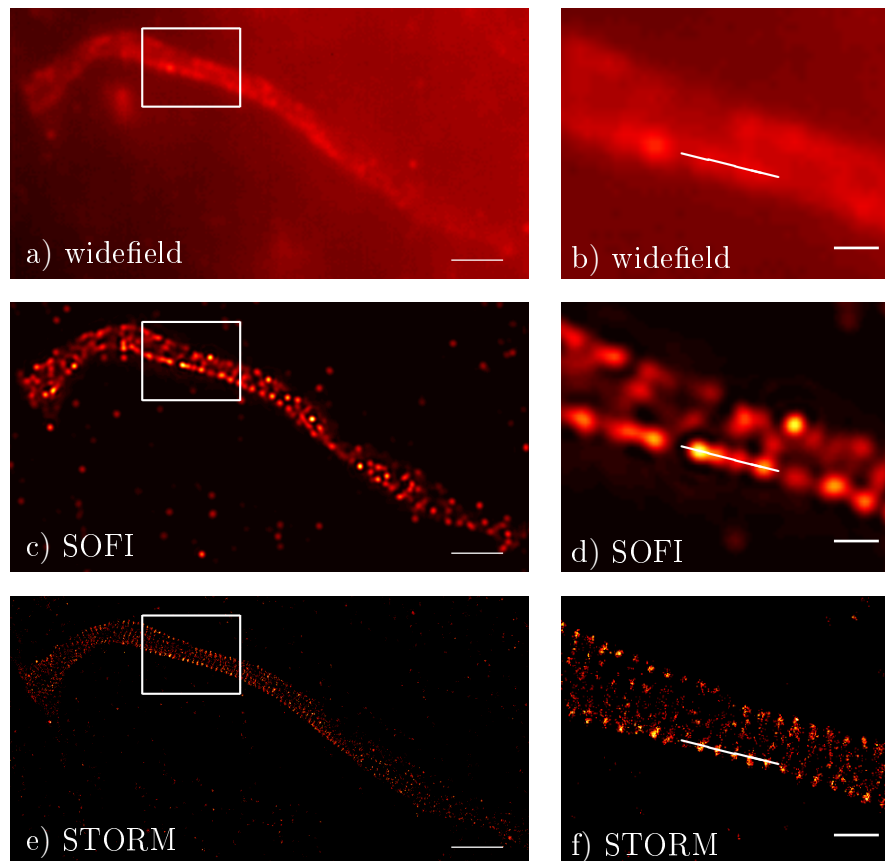


Figure 35. Widefield (a), SOFI (c), and STORM (e) image of spectrin immunostained with Alexa Fluor 647. Corresponding zoom-ins of boxed area (b, d, f). Photoswitching optimized for STORM. Scale bar: $2\ \mu\text{m}$, zoom-in $500\ \text{nm}$. Data obtained by Melanie Dannemeyer (unpublished).

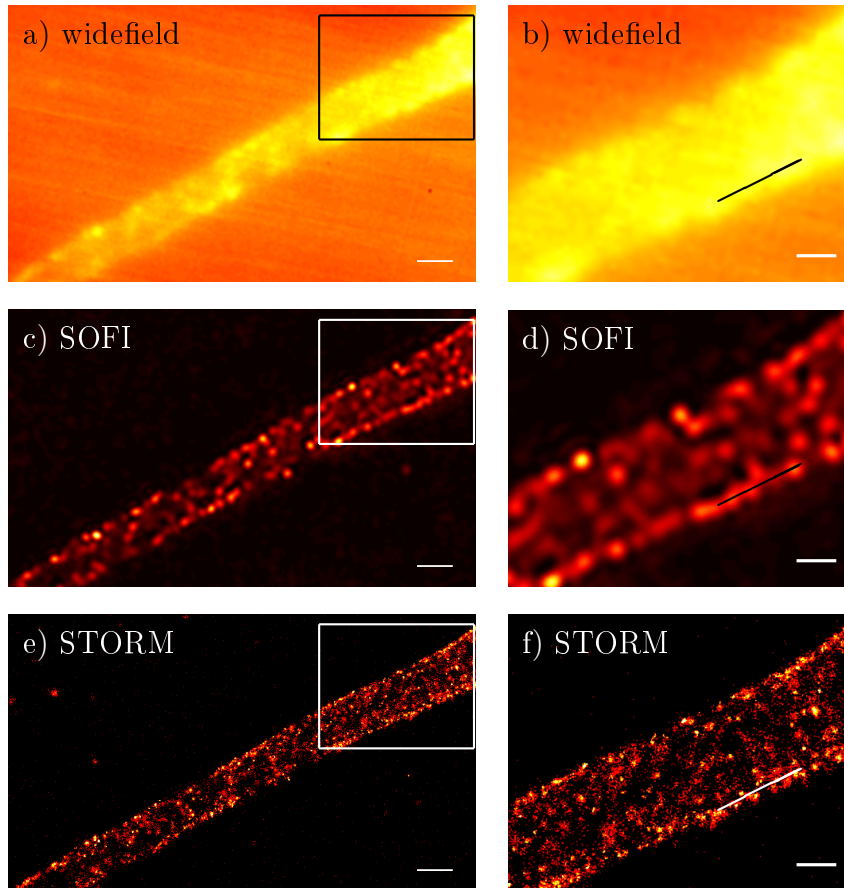


Figure 40. Widefield (a), SOFI (c), and STORM (e) image of sodium channels immunostained with Alexa Fluor 488. Corresponding zoom-ins of boxed area (b, d, f). Emitter off-states are too short for STORM analysis. Scale bar: 1 μm , zoom-in 500 nm. Data obtained by Melanie Dannemeyer (unpublished).